



Sandwell News

COVID-19 infection rates are
dangerously high
in our area

Don't leave your home

unless it's absolutely
essential

Covid-19 is everywhere - stay safe

!!!!WARNING FOR RESIDENTS IN SOHO & VICTORIA, SMETHWICK!!!!

⚠ Soho & Victoria in Smethwick has the highest
number of Covid-19 cases in the whole of Sandwell.

⚠ Please - if you live in this area take extra care.

And our message to everyone remains:

➡ Get tested if you have symptoms.

➡ Keep your distance from others, wear a face covering and wash your hands if you must
go out.

Please - follow the rules, stay safe and stay at home as much as possible.





Bin update - sorry for delays

Unfortunately, we are experiencing a large number of COVID-19 related staff absences which is going to cause delays to some bin collections this week.



If there are delays to collections in your road, please bear with us and leave your bin out. We'll get to you as soon as possible. All waste and recycling should be inside the bins and any extra that cannot fit can be placed in the bin once it has been emptied.

The situation continues to be very challenging and teams are working hard to keep disruption to a minimum.

[For more information and how you can check your bin collections](#)

Getting ready to make a big splash!

It's been a year now since construction work started on the new Sandwell Aquatics Centre in Smethwick.

  This incredible building will host the swimming and diving events for the [Birmingham 2022](#) Commonwealth Games which we are very excited to be part of next summer.



The centre will be part of Sandwell's legacy for you all to use and enjoy after the Games.

□ As you can see from the before and after video, there has been major transformation since work began a year ago with the building starting to take shape.

We are working with our partners to make sure staff stay Covid-safe while working on the building and we're looking forward to spring next year when construction should be complete.

[Check out our latest update video](#)



The census is a unique survey that takes place every 10 years in England and Wales.

By taking part, you'll help inform decisions that shape your community.

census 2021



Still time to have your say

Councils in the Black Country – including Sandwell – will return to the High Court on Wednesday 27 January to seek the [renewal of an injunction banning car cruising the region for a further three years](#).

The application will request an extension of the existing injunction, as well as a variation to it so that it applies not only to people organising and participating in a car cruise, but to spectators as well.

You have until 4pm on Thursday (21 January) to comment on the injunction and these plans by emailing litigation@wolverhampton.gov.uk. Comments received will be presented as evidence to the High Court.

Blue Monday goes green

♥ If you're feeling worried, lonely or anxious, or know someone who is struggling, support is available.

●● Blue Monday – the third Monday in

January – is claimed to be the most depressing day of the year due to the weather, dark nights and post-Christmas money worries. And this year, people may also be feeling low due to the Covid-19 pandemic and lockdown.

Green, which is the international colour for mental health awareness, is often seen as the colour of optimism, new beginnings and hope.



We shared information on mental health services yesterday to 'help turn Blue Monday green' and this [support is available all year round](#).

When it's your shot, they'll give you a shout

The [NHS will let you know when it's your turn](#) to receive the Covid-19 vaccine.

More than 447,000 people have had their vaccines in the Midlands region - the most vaccines across all the regions in the UK.

Remember the COVID-19 vaccine will always be available free of charge. The NHS will never ask you to share bank details to confirm your identity or pay for a vaccine.

HM Government

NHS

Covid-19 vaccine

The NHS will get in touch when it's your turn to be vaccinated

Find out about the roll-out at nhs.uk/CovidVaccine



HM Government



Your face
covering should

**COVER
YOUR NOSE**





Report abandoned vehicle

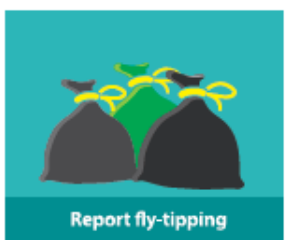


Book a bulky collection

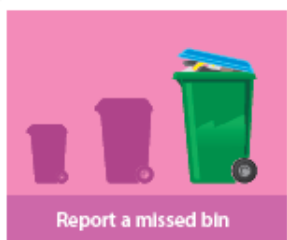
CALENDAR

| | | | | | | |
|----|----|----|----|----|----|----|
| 1 | 2 | 3 | 4 | 5 | 6 | 7 |
| 8 | 9 | 10 | 11 | 12 | 13 | 14 |
| 15 | 16 | 17 | 18 | 19 | 20 | 21 |
| 22 | 23 | 24 | 25 | 26 | 27 | 28 |
| 29 | 30 | 31 | | | | |

When is my bin day?



Report fly-tipping



Report a missed bin



Report a street light

my.sandwell.gov.uk