



Sandwell News

 HM Government





STAY HOME
PROTECT
THE NHS
SAVE LIVES

Dangerously high infection rates

  Stay at home. Protect the NHS. Save lives.

With infection rates still dangerously high in Sandwell, this message is so important.

 Thank you to everyone who is following the rules and doing their bit.

 [Get more information about what you can and cannot do during the national lockdown.](#)



Whilst you wait for your vaccine

While the Covid-19 vaccination programme is underway, it's vital we all continue to follow the [#HandsFaceSpace](#) guidance.


This still applies to anyone who has received the vaccine.



If you have to leave home to shop for essential items, try to go alone and limit the trips you make.

Remember to:

wash your hands

 cover your face

 make space

 Please follow the rules, stay safe and stay at home as much as possible.

Recycling collections suspended

As a result of Covid-19 related staff absences, the Council and our environmental partners Serco - have decided to suspend the blue lid recycling bin collections next week (25-29 Jan).

Any recycling bins not collected this week (18-22 January) should be left out until Saturday 23 January – crews will try to collect as many missed bins from this week as possible.

[For more information on your bin collection and other waste services](#)



Blue lid recycling bin collections suspended

Blue lid recycling collections will be suspended from next week (25 January) due to a large number of Covid-19 related staff absences.

Apologies for any inconvenience.

Find out more at
www.sandwell.gov.uk/bins





Supermarkets told to step up efforts

[We have issued a warning to all supermarkets and large shops in Sandwell.](#)

With [West Midlands Police](#), we want to ensure customers and shop staff are kept safe and ask shops to:

ensure face coverings are worn,

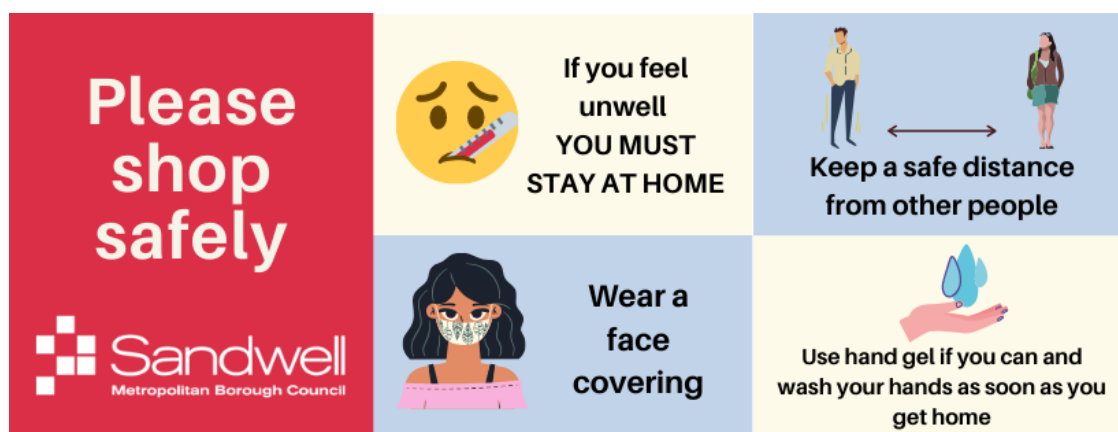
encourage customers to use hand sanitiser as they enter and

limit the number of customers allowed in stores.

manage queues and have one-way systems

Supermarkets are places where we are likely to come into contact with others and therefore are a risk for infection. We will be visiting supermarkets to ensure that stores are following the rules and doing everything they can to keep staff and customers safe. Those not adhering to the rules may face enforcement action.

Please take care in shops and stay at least 2 metres away from others and wearing face coverings at all times.



The census is coming

By taking part in Census 2021, you can help inform decisions about services that shape your community, such as healthcare, education and transport.

[For more information on the Census 2021](#) there is also a [video that explains more](#)

Healthy changes start with little changes 🧐

Whether you want to:

👉 lose weight

👤 get active

🚭 quit smoking

The NHS Better Health website has lots of free tools and support. You can also find simple ways to lift your mood with Every Mind Matters

There has never been a better time to [kickstart your health](#). Let's do this! 🏃



THE FIRST STEP IS A FEW STEPS.

NHS

It's never too late to get active to improve your health.
Get help and support at nhs.uk/BetterHealth

Better Health **LET'S DO THIS**



We are still open and still offering support during lockdown.



Black Country Women's Aid is an independent charity which has supported survivors of domestic abuse and sexual violence in the West Midlands for 30 years.

From Gov.UK:



Household isolation instructions as a result of coronavirus do not apply if you need to leave your home to escape domestic abuse.

Don't suffer in silence during lockdown.

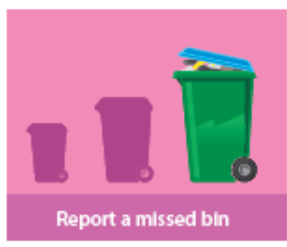
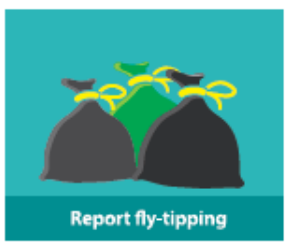
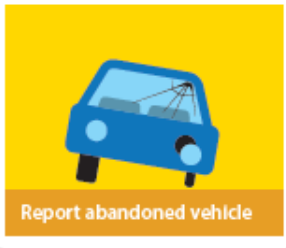
- Call our **24-hour helpline** 0121 552 6448
- Text or **WhatsApp us** on 07384 466 181 (9am-9pm weekdays)
- Call **999 in an emergency**
- **Visit our website** for more information

www.blackcountrywomensaid.co.uk



Black Country Women's Aid

we listen, we support, we care



my.sandwell.gov.uk