



Sandwell News

Extra testing in Oldbury/Tipton border area

Postcodes of households who should get a test:

DY4 7GZ, DY4 7RD, DY4 7RF, DY4 7SB, DY4 7SD, DY4 7SE, DY4 7SF, DY4 7SJ, DY4 7SN, DY4 7SP, DY4 7SQ,
DY4 7SR, DY4 7SS, DY4 7ST, DY4 7SU, DY4 7SW, DY4 7SX, DY4 7SY, DY4 7SZ, DY4 7TA, DY4 7TD, DY4 7TE,
DY4 7TF, DY4 7TG, DY4 7TH, DY4 7TJ, DY4 7TL, DY4 7TY, DY4 7TZ, DY4 7UD, DY4 7UF, DY4 7UW, DY4 7XF,
DY4 7XG, DY4 7XH, DY4 7XL, DY4 7XP, DY4 7XQ, DY4 7XT, DY4 7XU, DY4 7XW, DY4 7XX, DY4 7XY, DY4 8XU,
DY4 7RB, DY4 7RG, DY4 7RL, DY4 7RQ, DY4 7SA, DY4 7TB, DY4 7TN, DY4 7TP, DY4 7TR, DY4 7TS, DY4 7TT,
DY4 7TU, DY4 7TX, DY4 7UL, DY4 7UP, DY4 7UR, DY4 7XN, DY4 7XR, DY4 8LS, DY4 8RN, DY4 8SF, DY4 8SS,
DY4 8UH, DY4 8UP, DY4 8UR, DY4 8UT, DY4 8XA, DY4 8XB, DY4 8XD, DY4 8XE, DY4 8XF, DY4 8XG, DY4 8XP,
DY4 8XQ, DY4 8XX, DY4 8XY, DY4 8XZ, DY4 8RD, DY4 8RE, DY4 8RF, DY4 8RG, DY4 8RJ, DY4 8RP, DY4 8RR,
DY4 8RS, DY4 8RT, DY4 8RY, DY4 8RZ, DY4 8SE, DY4 8SX, DY4 8SY, DY4 8SZ, DY4 8UU, DY4 8UW, DY4 8UX,
B69 2JL, B69 2JZ, B69 2LA, B69 2LB, B69 2LD, B69 2LE, B69 2LF, B69 2LG, B69 2LH, B69 2LL, B69 2LN, B69 2LP,
B69 2LQ, B69 2LR, B69 2LS, B69 2LT, B69 2LU, B69 2LW, B69 2LX, B69 2LY, B69 2LZ, B69 2NA.

For more details: www.sandwell.gov.uk/extrateesting

Covid-19 testing - Oldbury/Tipton border

⚠ URGENT FOR RESIDENTS IN OLDBURY/TIPTON BORDER AREA ⚠

Extra Covid-19 testing is being carried out if you live in specific areas on the Oldbury/Tipton border. This follows a case of the variant first discovered in South Africa being identified in the area.

We strongly encourage people aged 16 and over without symptoms within specific streets in the Oldbury/Tipton border area to take a PCR Covid-19 swab test, even if you are not showing any symptoms.



 Sandwell
Metropolitan Borough Council

 NHS
Test and Trace

**COVID-19: NEW
VARIANT IN YOUR AREA**

**ENHANCED TESTING
AVAILABLE**

A new variant of Covid-19 is present in the Oldbury/Tipton area.

Get tested now

Check if you live in the area affected and how to get tested at:
www.sandwell.gov.uk/testsandwell


**STAY HOME
PROTECT
THE NHS
SAVE LIVES**

The PureGym car park in Dudley Port is open for testing for those in this area WITHOUT SYMPTOMS. The site will be open every day from 9am-3pm, including weekends.

If you can walk to the site, there is no need to book. If you have to drive to the site, you MUST book an appointment on our website.

If you have symptoms (a high temperature, a new, continuous cough or a loss or change to your sense of smell or taste) you must book a test in the usual way and not go to PureGym.

Census day is on Sunday 21 March

 Households will now have received a letter with an access code [to take part online](#).

This letter includes advice if you need any support to fill in the census.

You don't have to wait until Sunday to fill it in. Complete your census and be part of history!



NEW If you are a Sandwell Council tenant you can now do these things online

- ◆ apply for a mutual exchange
- ◆ ask permission to alter your property
- ◆ terminate your tenancy
- ◆ change your personal details – people moving in or out
- ◆ notify us of a tenant's death
- ◆ tell us something else about your home or tenancy

Sign up for a MySandwell account and access online housing services at

www.sandwell.gov.uk/HousingContactUs

A 3D isometric illustration of a house with a red roof, a white chimney, and a blue window. The house is set on a green base.

You can also: request a joint tenancy, apply for or end a garage tenancy, tell us if your home is too big or too small, or you feel unsafe in your home.

[To find out more go to the Contact Housing webpage.](#)



Polling stations will be safe places to vote in May

But if you prefer to vote by post, make sure you apply early.

The deadline to get a postal vote in this year's elections is 5pm on Tuesday 20 April - but we're asking you to please apply as soon as you can.

✓ [Check out the Sandwell postal vote webpage to apply.](#)

Can you help us with our online safety review?

We want to develop our online safety training and support for the following groups:

- ✓ Children and young people
- ✓ Parents and carers
- ✓ Adult residents
- ✓ Professionals



[Please complete our short survey by 1 April.](#)

Looking for a new job? Sign up for alerts NOW!

Do you know someone who'd like to receive emails about jobs in Sandwell, the rest of the Black Country and Birmingham?

Get them to sign up to our [job alerts](#).



 **Sign-up for our job alerts**

Take the hassle out of job searching

 Sandwell
Metropolitan Borough Council







 Sandwell
Metropolitan Borough Council

HEALTHY SANDWELL
www.healthy.sandwell.co.uk

WARNING TO PEOPLE IN SMETHWICK WARD


Covid-19 infection rates and cases in the Smethwick ward are higher than anywhere else in Sandwell


Smethwick ward advice


  While Sandwell has seen one of the fastest falls in Covid-19 case rates in the country, we are concerned about [higher rates currently in Smethwick ward](#).

The rate of infection in Smethwick ward is twice as high as the average rate for Sandwell as a whole, so we're urging people living and working in the area to be extra careful and make sure they follow all the rules

and stay safe.

 Smethwick ward is part of wider Smethwick town area. The ward includes the Londonderry Lane, Stony Lane and Manor Road areas and part of Thimblemill Road, as well as Smethwick Hall Park, Harry Mitchell Park and Uplands Cemetery.

 Anyone showing symptoms must self-isolate and [book a Covid-19 test](#).

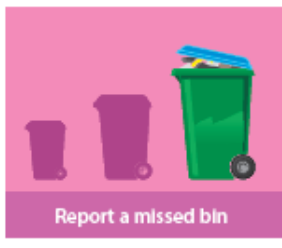
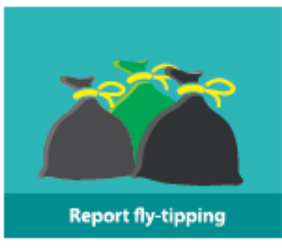
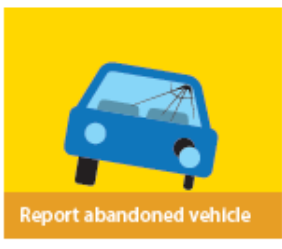


**Every
video call
is making
a difference**

Staying in our homes is helping
stop the spread of Covid-19.

Let's keep going

**STAY HOME
PROTECT
THE NHS
SAVE LIVES**



my.sandwell.gov.uk