



Sandwell News

Please stay safe in our parks and green spaces

Please continue to follow the rules and help stop the spread of Covid-19



Easter Bank Holiday Covid-19 reminders



Find out what you can and can't do now restrictions have changed

Please take extra care over the Easter Bank Holiday weekend.

Keep following the latest Government rules to help avoid a big spike in Covid-19 infections.

Take care wherever you are – whether it's a meet-up in a private garden or a public park.

- You can meet outdoors either in a group of 6 (from any number of households), or in a group of any size from up to 2 households (a household can include an existing support bubble, if eligible)
- You can take part in formally organised outdoor sports with any number of people (outdoor sports venues and facilities will be able to reopen)

- Childcare and supervised activities are allowed outdoors for all children
- Formally organised parent and child groups can take place outdoors for up to 15 attendees. Children under 5 will not be counted in this number

Please do not meet in large groups at Sandwell Valley Country Park or at other parks and open spaces across our six towns.

Visitors to parks and open spaces are also urged to observe social distancing guidelines to protect themselves and others and help save lives.

The tip is open all Easter Bank Holiday, 8am-4pm – book your slot

The tip in Oldbury will be open as normal over Easter. You can recycle loads of items at the tip like electrical items, wood, clothing, carpets and much more.

The tip is open every day 8am-4pm and the booking system will mean no Easter queues - so book your visit today!

 [Go to the tip webpage to book.](#)



Have you filled in your Census yet?

We wanted to thank everyone who has filled in and returned their Census 2021.

However, it is vital [if you haven't yet responded](#) that you do so as soon as possible.

If you need help filling in your census, call 0800 141 2021.

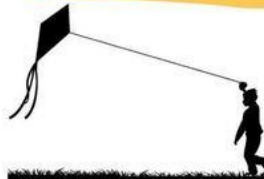
For more information visit the [Census 2021 website](#).

The census is a **unique survey** that takes place every 10 years in **England and Wales**.

By taking part, you'll help inform decisions that shape your community.

census 2021





Go play Sandwell



| | | | | | |
|---------|--------------|-----------|--------|------------|---------------|
| Oldbury | Rowley Regis | Smethwick | Tipton | Wednesbury | West Bromwich |
|---------|--------------|-----------|--------|------------|---------------|



EASTER EGGSTRAVAGANZA



FREE Virtual Sessions

Join us online for our easter themed Go Play activity sessions via Zoom! These sessions are suitable for families aged 5-12yrs (up to 16yrs with SEN-D).



Tuesday 6th April 2021

to

Friday 16th April 2021



Session 1

10:30-11:30



Session 2

1:30-2:30

We have **LIMITED** spaces available, so its important to book online no later than 24 hours prior sessions.

**All Zoom sessions are password protected and are facilitated by 2 staff members.*

www.goplaysandwell.co.uk

For more information please EMAIL hello@goplaysandwell.co.uk or TEXT (Only) "Call Back" to 07984388558.



@GoPlaySandwell

Funded and Supported by



Powered by



ownload

Easter activities for children

Our friends Go Play Sandwell are hosting two virtual Easter sessions every day from Tuesday 6 April to Friday 16 April.

Sessions are aimed at children age five to 12 years old (16 with special educational needs or disabilities).

There are LIMITED spaces so it's important to book online no later than 24 hours before the session you want to attend.

If you are a Sandwell Council tenant you can now do these things online

- ◆ request a joint tenancy
- ◆ apply for a garage or end your garage tenancy
- ◆ tell us if your home is too big
- ◆ tell us if your home is too small
- ◆ tell us if you feel unsafe
- ◆ tell us something else about your home or tenancy

Sign up for a MySandwell account and access online housing services at

www.sandwell.gov.uk/HousingContactUs



You can also: apply for a mutual exchange, ask permission to alter your property, terminate your tenancy, change your personal details and more.

[To find out, more go to the Contact Housing webpage.](#)



Please don't litter

Our parks and green spaces have been used like never before over the last year. Sadly, lots of people leave their litter behind.

We want people to be able to enjoy our parks but it's not fair when rubbish is left.

If you are planning on visiting our parks over the Easter period (or any time), keep to the rules on meeting in groups and make sure you:

- Use a bin for your litter.
-

- If the bin you see is already full, take your litter home – leaving it by the side of the bin isn't the answer.
- If you brought it with you, you can take it home again, too, and you may be able to recycle some items in your blue-lid recycling bin.

[Stop with the 'rubbish' excuses and bin your litter.](#)

An NHS advertisement featuring a male patient and a female healthcare worker in a pharmacy. Both are wearing blue face masks. The patient is looking at something in his hands, and the healthcare worker is looking down at it. The background shows shelves of medicine. The text is overlaid on the image.

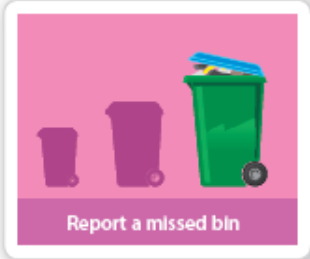
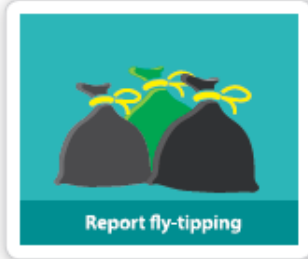
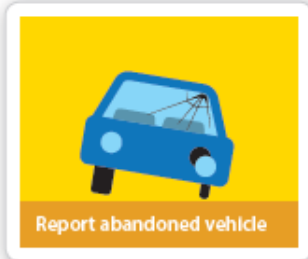
HM Government

NHS
Test and Trace

**Don't "assume" you
don't have COVID-19.
Know it.**

If you think there's a chance you could have coronavirus,
getting tested is the only way to be sure.

DON'T GUESS, GET A TEST.



my.sandwell.gov.uk