



## Sandwell News



**Covid-19 update - what to do if you're a close contact of someone with Covid-19**

Close contacts of positive Covid-19 cases no longer need to self-isolate if they are either:

- ✓ double jabbed or
- ✓ under 18.

Instead you should book a PCR test.

Please take particular care around people at increased risk from Covid-19 – and if you are a close contact of a positive case, even if you test negative yourself and you don't have to self-isolate, think carefully about who you have contact with.



## Be ready to go back to school safely

Here are three really important messages for parents who have children returning to or starting school:

- Secondary students should get tested for Covid-19 before they return to school this September - check your child's school website for details of testing.
- The government is also asking parents of primary school children to continue their twice weekly tests at home.
- Students aged sixteen and over are also now eligible to get their first dose of the Covid-19 vaccine so are encouraged to do so as soon as possible.



## Bin collection update

Due to staff shortages caused by strike action earlier this week, there have been some delays to domestic waste and recycling bin collections.

Crews have been working hard throughout the week to catch up with missed bins and will continue into this evening. Teams will also be

working tomorrow (Saturday 4 August) to collect the small number of outstanding domestic waste and recycling bins.

If the bins in your street have not yet been emptied, please leave them out and they will be collected as soon as possible.

All garden waste collections were suspended this week in order to prioritise other waste collections. This service will restart on the usual schedule from Monday 6 September. [Find out when your next garden waste collection is.](#)

We apologise for any inconvenience caused during this time and thank you for your understanding.

---





## 🌻🌻🌻 Have you seen our magnificent sunflower field at Forge Mill Farm?

This weekend could be your last chance to see the sunflowers in all their glory.

The farm is open from 10am to 4pm daily. All visitors to the farm should [purchase tickets in advance for a '2-hour visit' allocated time slot.](#)

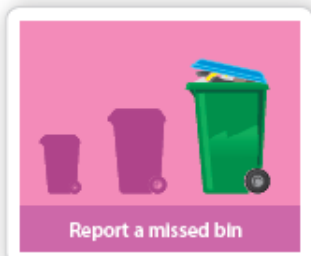
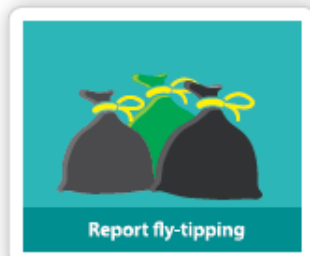
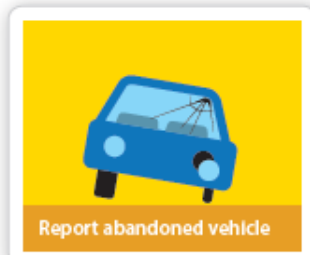
---

## Get on your bike for Cycle September

Cycle September is here and what a great excuse to enjoy all the benefits of riding a bike



Dust off your bike or hire a [WMCycleHire bike](#) - it only takes a 10-minute spin to start feeling the benefits! [Register for Love to Ride](#) to win prizes for your miles.



[my.sandwell.gov.uk](http://my.sandwell.gov.uk)

---