



Sandwell News





**Join the millions
already vaccinated**


EVERY VACCINATION
GIVES US

HOPE


Covid-19 - vaccination reminder

 Still need your first or second Covid-19 jab?

 Come along to The Hawthorns, home of West Bromwich Albion, tomorrow (Saturday) between 10am and 6pm.

 Pfizer vaccine only, available for anyone aged 16 and over.

 No appointment necessary, just turn up.

 Details of other pop-up vaccine clinics are listed on our [Healthy Sandwell website](#).

Visit the Black Country and West Birmingham CCG website for [more information on local walk-in vaccination sites](#).

Request repairs online through MySandwell

If you're one of our tenants, did you know you can now request repairs through MySandwell?

It's really easy. Just create an account and [you can report a repair](#) - like a broken radiator - 24/7 from your phone, tablet or computer.

Once you've requested your repair, you can choose an appointment time to suit you, all without having to pick up the phone to call.



Important information about festivals this weekend

✔ There will be road closures around [Sandwell Valley Country Park this weekend - details are on our website.](#)

⚠ [If you live in the 'pink zone' on the map](#), please use your parking permit if you park on the road.

👍 If you are visiting Sandwell Valley Country Park, please use entrances and car parks on the Forge Mill

side of the park.

⚠ There will be no access using the entrances at the side of the park nearest to West Bromwich town centre. Sandwell Park Farm, the cycle centre, the adventure play area, pump track, gym equipment and golf are CLOSED.

❤ Our teams have worked really hard to minimise disruption to local residents and visitors to the park and these measures are in place to keep everyone safe, stop nuisance parking and keep roads clear.

Black Country | Plan

Planning for the future of the Black Country

Have your say!

Black Country Plan - still time to have your say

The draft Black Country Plan 2039 is a document which plans for future development of the area.

This is now being consulted on by the four Black Country councils – Dudley, Sandwell, Walsall and Wolverhampton.

[Watch the animation video on YouTube for more information.](#)

The government projects that the Black Country will need just over 76,000 new homes over the next 20 years.

To support this growth, we also need 560 hectares of land to accommodate new jobs by 2039. This is the equivalent to 835 football fields.

The consultation gives people the chance to have their say on the proposed sites for development and where they think new development should be in the Black Country.

It's really important you have your say before the consultation closes on Monday 11 October 2021.

You can find out more and complete the survey:

- on the [Black Country Plan website](#)
- at Sandwell Council House reception or your local library
- or email blackcountryplan@dudley.gov.uk for more information.

Make an IMPACT on your career

Are you unemployed, aged 16–29 and unsure about your next steps? Connexions Sandwell can help.

[The Black Country Impact project will help support you](#) into education, employment or training. There really is something for everyone.



This project is receiving up to £43.6 million of funding made up of £21.8 million from the European Social Fund and £21.8 million from the Youth Employment Initiative, plus match funding of up to £21.8 million from the National Lottery Community Fund and partners.

Are you aged between 16 – 29 and not engaged in education, employment or training and live in Sandwell?

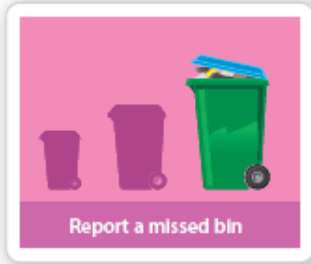
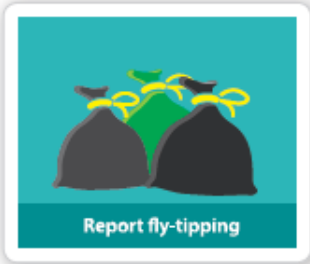
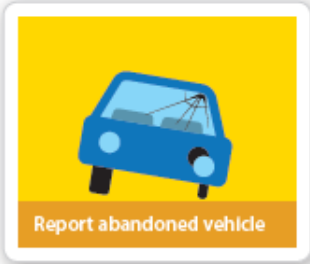
Make an IMPACT with these programmes!



- Beauty and Massage
- English and Maths Qualifications
- Employability
- Fork Lift Truck
- SIA, CCTV, First Aid
- Film & Visual Podcasting
- Coding
- Video and Gaming
- Digital Skills
- TikTok and The Apprentice activities
- Construction, CSCS Card and Trades and much more....

For more information contact 0121 569 2955 or email: sandwell_connexions@sandwell.gov.uk





my.sandwell.gov.uk