



Sandwell News



HM Government

NHS



COVID-19 OMICRON EMERGENCY

GET BOOSTED NOW

Every adult in the country now needs to get a Covid-19 booster vaccine, because two doses of vaccine is not enough to give the level of protection against infection we all need.

GET YOUR BOOSTER NOW
NHS.UK/COVIDVACCINATION

Covid-19 - get your booster now!

 The Government has announced a Covid-19 Omicron emergency 

[Find a walk-in centre near you to get your booster as soon as you can.](#)

You can get a booster dose from a walk-in site if it's been 3 months (91 days) since your 2nd dose and you're either:

- ✓ aged 18 years old or over
- ✓ aged 16 years old or over with a health condition that puts you at high risk from COVID-19

If you are eligible, do not delay. This is the best way to protect you and your loved ones from COVID-19.

Keep yourself and others safe

As well as getting your Covid-19 vaccinations, there are [new restrictions in place to help stop the rapid spread of the Omicron variant](#):

😊 Face coverings will become compulsory in most public indoor venues, other than hospitality.

🏠 Work from home if you can

📱 The NHS Covid Pass is mandatory in specific settings, using a negative test or full vaccination via the NHS Covid App.

[The NHS App is FREE](#) and you will never be asked to pay to download it. Please ignore any scam text messages you may receive.



Have you got the NHS App?

Simplify your life.
Download the NHS App 😊



Pop Up Clinics



Details:

www.healthysandwell.co.uk/clinics



Sandwell
Metropolitan Borough Council



Get your jab at these local walk-in clinics

👁️ We have pop-up clinics for Covid-19 vaccines taking place across Sandwell over the next few days. You can find dates and location on the [NHS vaccination website](#) and [Healthy Sandwell website](#)

 Confederation of Bangladeshi Organisations

Greets Green Resource Centre, Harwood Street, West Bromwich, B70 9JF

Wednesday 15 December 2021 11am-4pm

Pfizer available

 Cradley Heath Community Centre

Reddal Hill Rd, Cradley Heath, B64 5JG

Monday 20 December 2021 10am-3pm


Pfizer available

 West Bromwich Albion Football Club

The Hawthorns, Birmingham Road, West Bromwich, B71 4LF

Friday 17 December 20121 10am-4pm

Pfizer available

 Queens Square Shopping Centre

Unit 10 Mall 4, High Street, Sandwell Centre, West Brom B70 7NJ

Saturday 18 December 2021 10am-4pm

Pfizer available

[If you can't make these dates, book your appointment or search for a walk-in clinic on the NHS website.](#)



Avian flu in Sandwell

Following avian flu being found in wild birds in Sandwell – specifically at Victoria Park, Tipton – [we're reminding people not to touch sick, dying or dead wild birds.](#)

The risk to human health is very low but if you're in our parks and open spaces and find a dead bird, please report it to the council on 0121 368 1177 (Option 2 Street Cleansing, then Option 3 Dead Animals) (Monday to Friday 8am to 5.30pm).

If you're calling out of hours, please email ancillary_support@sandwell.gov.uk

If you have found a sick or injured bird, contact the RSPCA on 0300 1234 999.

[More information about avian flu](#)



AVIAN INFLUENZA

**Avian
Influenza
has been
detected in
wild birds in
Sandwell.**



The public should avoid contact with wild birds including their feathers and waste.

- Do not pick up or touch sick, dying or dead wild birds
- Avoid contact with surfaces contaminated with bird faeces
- Keep to footpaths and keep your dog on a lead when around wild birds



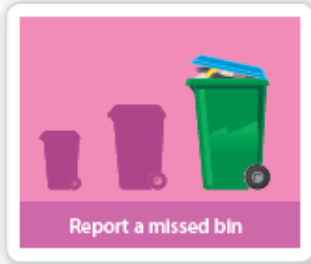
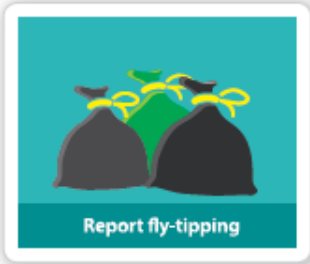
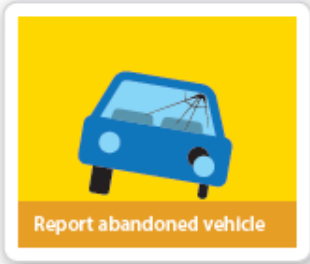
If you find a dead bird, do not touch it or move it.

Report any dead wild birds to Sandwell Council on **0121 368 1177**
(Option 2 Street Cleansing, Option 3 Dead Animals)
(Monday-Friday 8am-5.30pm). If you're contacting us out of hours, please
email **ancillary_support@sandwell.gov.uk**

Report any sick or dying birds to the RSPCA **0300 1234 999**

Contact UKHSA if you have touched a sick or dead bird **0344 225 3560**

More information at **www.sandwell.gov.uk/avianflu**



my.sandwell.gov.uk

